

# FOUNTAINS SOUTH COMPLEX PUD

BEING A REPLAT OF ALL OF TRACT B1, FOUNTAINS SOUTH REPLAT OF TRACTS A1 AND B1,  
 AS RECORDED IN PLAT BOOK 49, PAGES 98 THROUGH 100,  
 TOGETHER WITH A PORTION OF GOLF TRACT 3, FOUNTAINS SOUTH GOLF COURSE,  
 AS RECORDED IN PLAT BOOK 67, PAGES 18 THROUGH 22,  
 ALL OF THE PUBLIC RECORDS OF PALM BEACH COUNTY, FLORIDA,  
 LYING IN SECTION 34, TOWNSHIP 44 SOUTH, RANGE 42 EAST, PALM BEACH COUNTY, FLORIDA

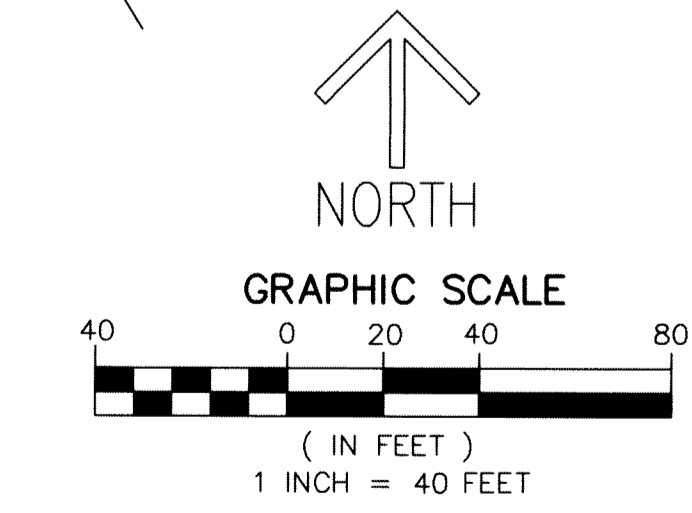
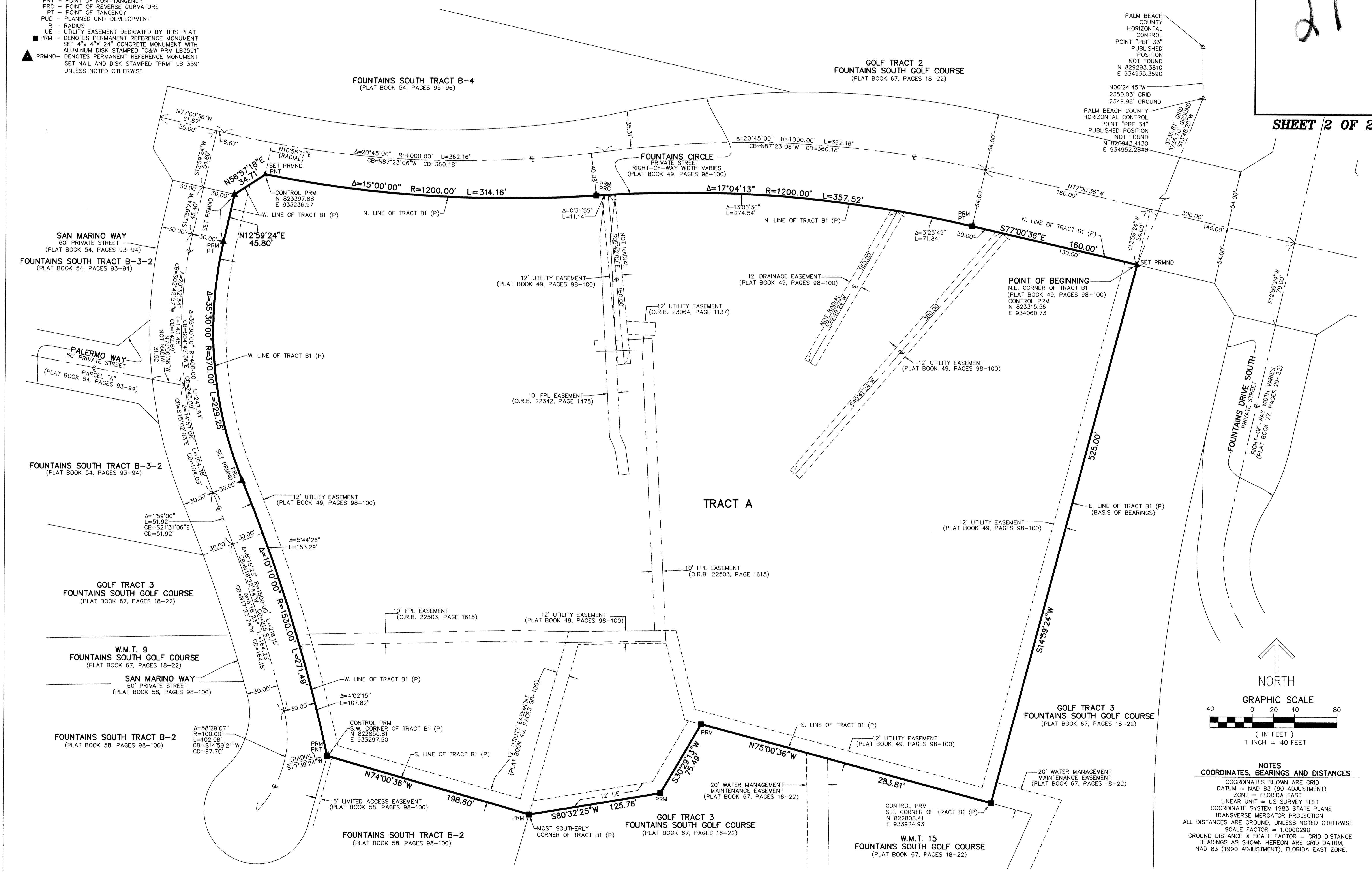
THIS INSTRUMENT PREPARED BY  
 DAVID P. LINDLEY  
 OF  
**CAULFIELD and WHEELER, INC.**  
 SURVEYORS - ENGINEERS - PLANNERS  
 7900 GLADES ROAD, SUITE 100  
 BOCA RATON, FLORIDA 33434 - (561)392-1991

27

**SHEET 2 OF 2**

## LEGEND/ABBREVIATIONS

- ⊕ - CENTERLINE
- Δ - DELTA (CENTRAL ANGLE)
- CB - CHORD BEARING
- CD - CHORD DISTANCE
- E - EASTING (WHEN USED WITH COORDINATES)
- L - ARC LENGTH
- LB - LICENSED BUSINESS
- LWDD - LAKE WORTH DRAINAGE DISTRICT
- N - NORTHING (WHEN USED WITH COORDINATES)
- (NR) - NON-RADIAL LINE
- O.R.B. - OFFICIAL RECORD BOOK
- PC - POINT OF CURVATURE
- PI - POINT OF INTERSECTION
- PNT - POINT OF NON-TANGENCY
- PRC - POINT OF REVERSE CURVATURE
- PT - POINT OF TANGENCY
- PUD - PLANNED UNIT DEVELOPMENT
- R - RADIUS
- UE - UTILITY EASEMENT DEDICATED BY THIS PLAT
- PRM - DENOTES PERMANENT REFERENCE MONUMENT  
 SET 4" X 4" CONCRETE MONUMENT WITH ALUMINUM DISK STAMPED "C&W PRM LB3591"
- ▲ PRMND - DENOTES PERMANENT REFERENCE MONUMENT  
 SET NAIL AND DISK STAMPED "PRM" LB 3591 UNLESS NOTED OTHERWISE



**NOTES**  
**COORDINATES, BEARINGS AND DISTANCES**  
 COORDINATES SHOWN ARE GRID  
 DATUM = NAD 83 (90 ADJUSTMENT)  
 ZONE = FLORIDA EAST  
 LINEAR UNIT = US SURVEY FEET  
 COORDINATE SYSTEM 1983 STATE PLANE  
 TRANSVERSE MERCATOR PROJECTION  
 ALL DISTANCES ARE GROUND, UNLESS NOTED OTHERWISE  
 SCALE FACTOR = 1.0000290  
 GROUND DISTANCE X SCALE FACTOR = GRID DISTANCE  
 BEARINGS AS SHOWN HEREON ARE GRID DATUM,  
 NAD 83 (1990 ADJUSTMENT), FLORIDA EAST ZONE.